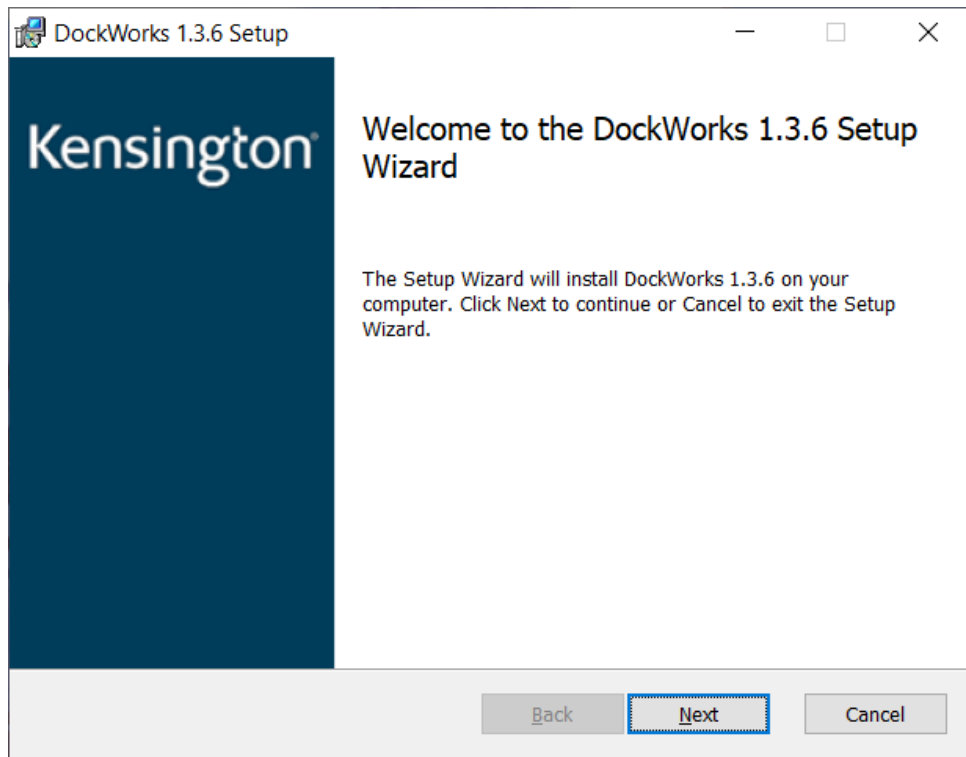
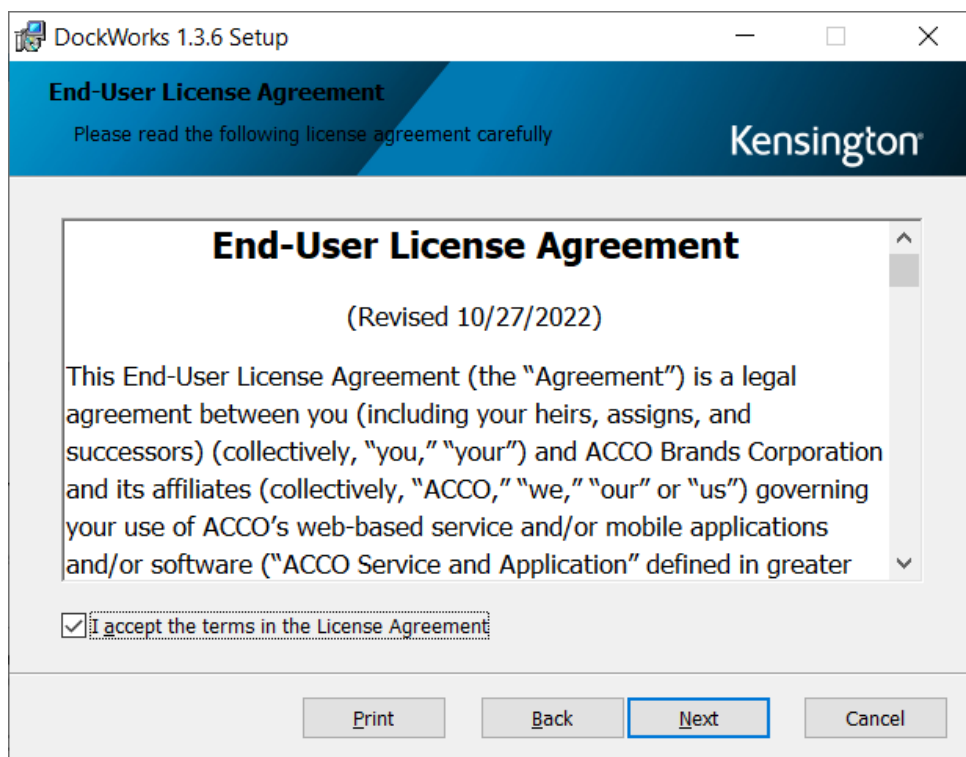


Windows Installation Process

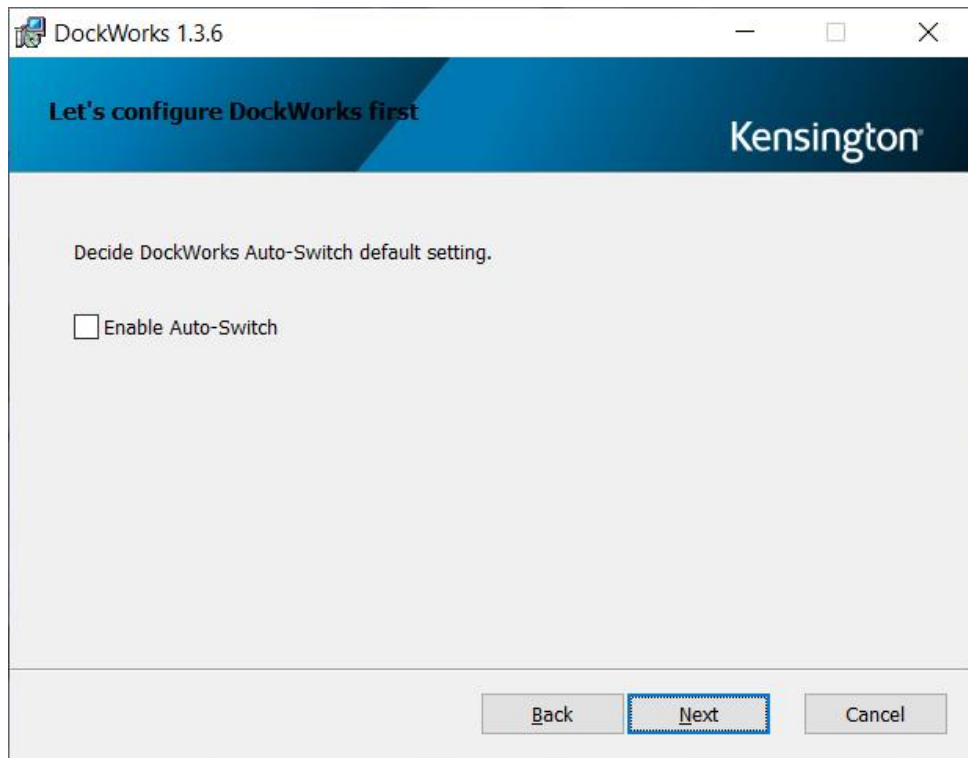
1. Download DockWorks™ from <https://www.kensington.com/dockworks/>
2. Locate the file and double-click it to launch the installation process. The first snapshot is as follows, just select 'Next' to go forward.



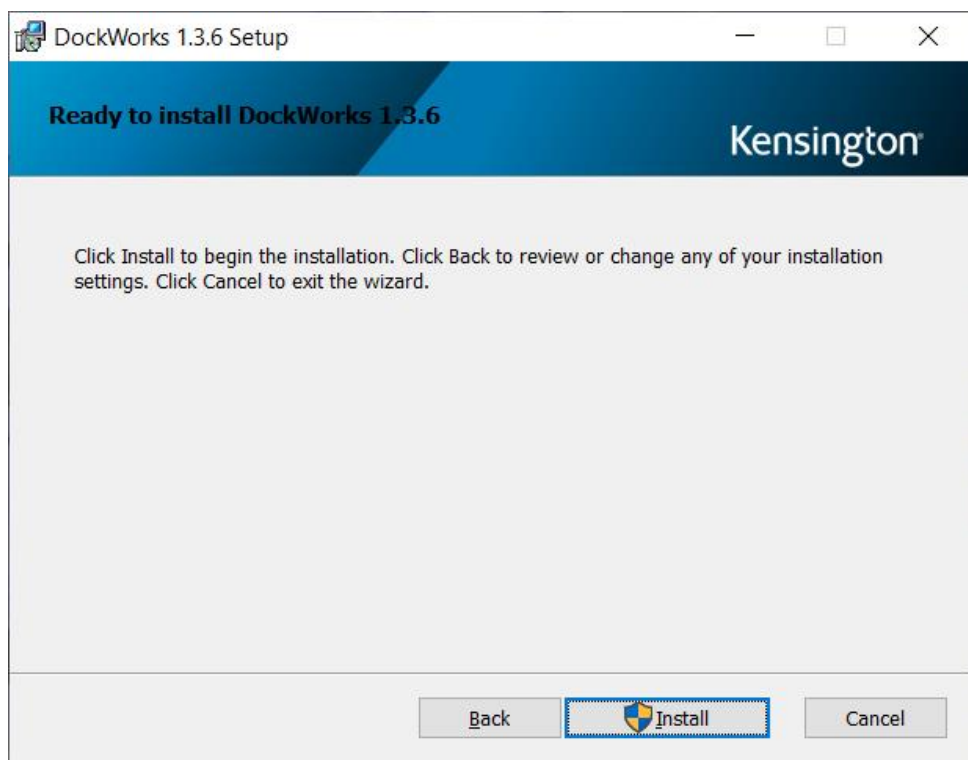
3. Read and agree to the license agreement, then select 'Next'.



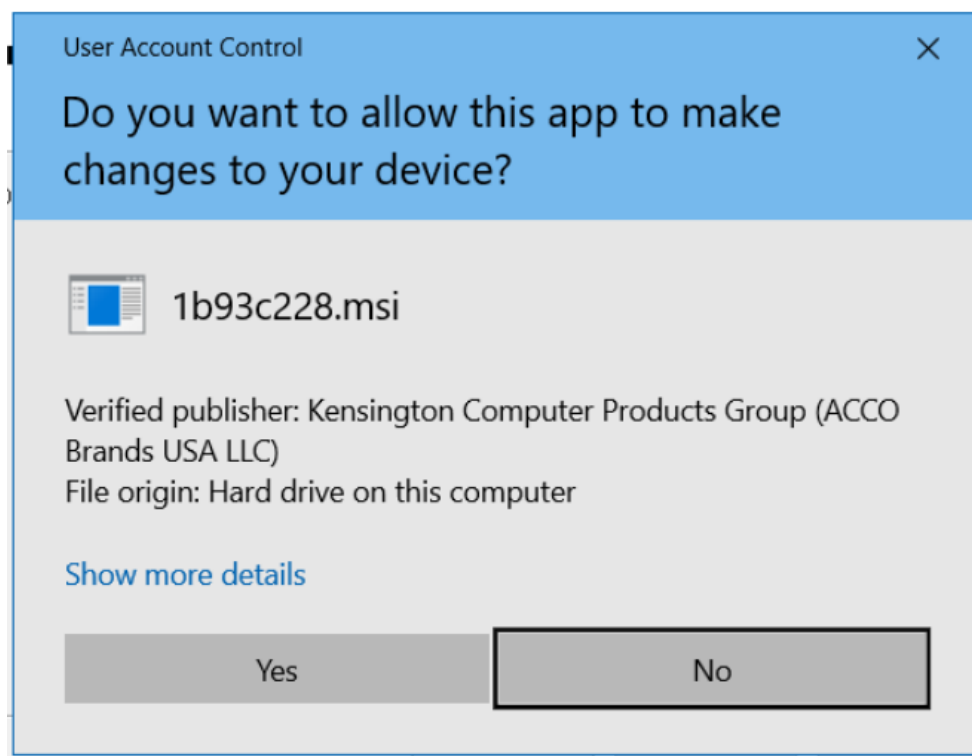
4. Select whether you want to enable Auto-Switch by default or not, then select 'Next'.



5. Select 'Install' to begin the installation.

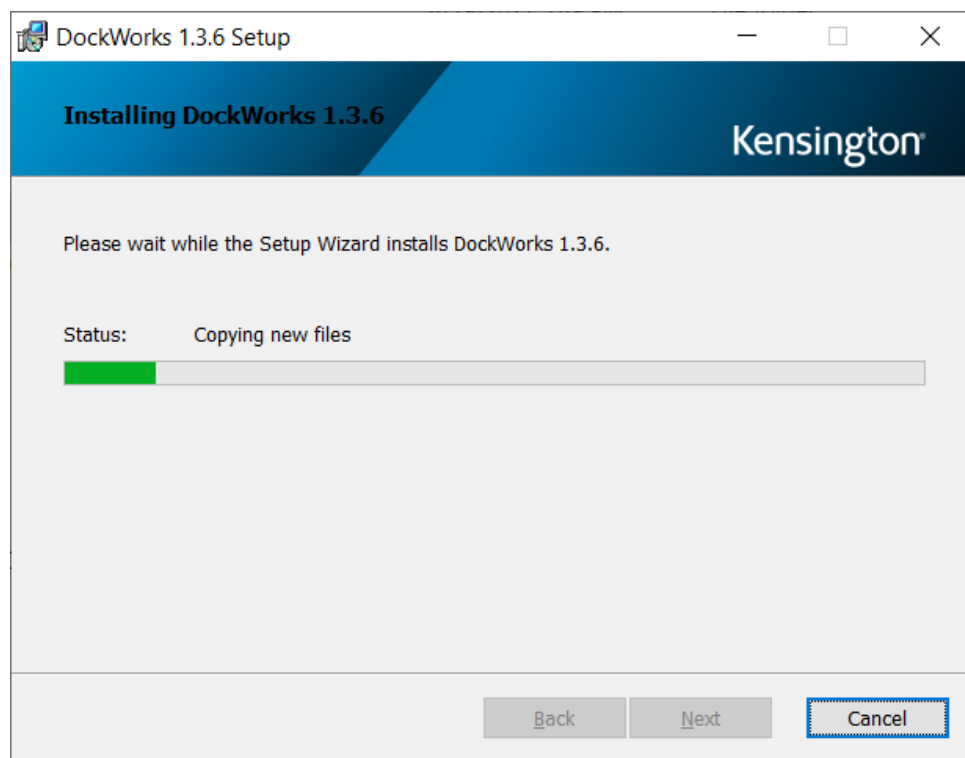


6. If prompted with the message, “Do you want to allow the following program to make changes to this computer?” select ‘Yes’.

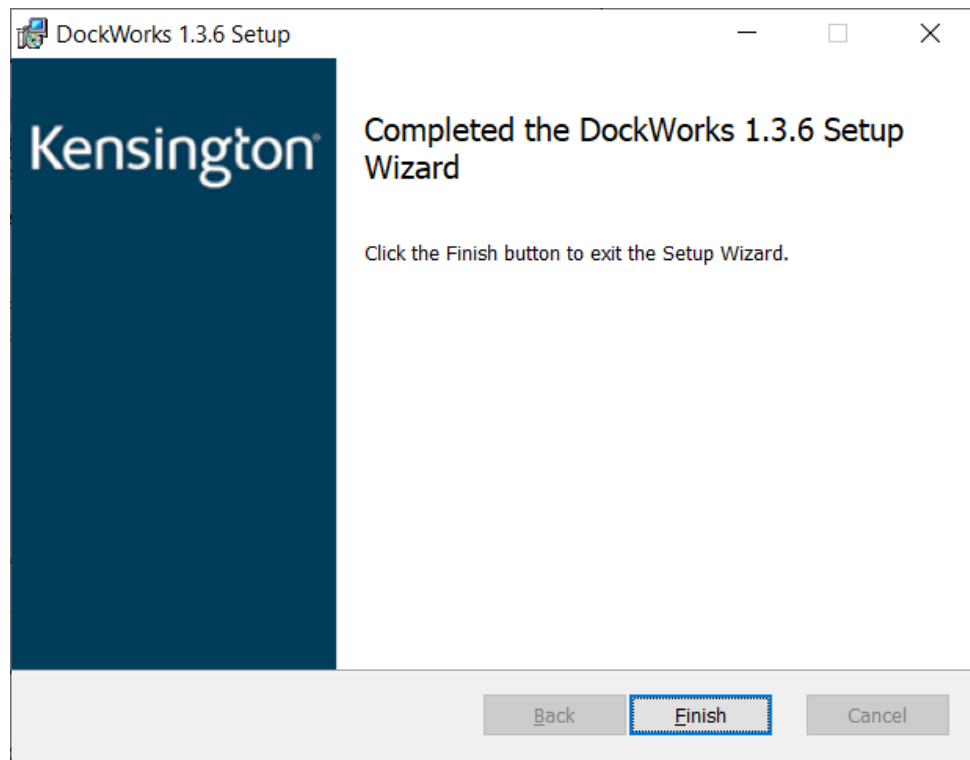


*The wording '1b93c228' is a random string generated by system.

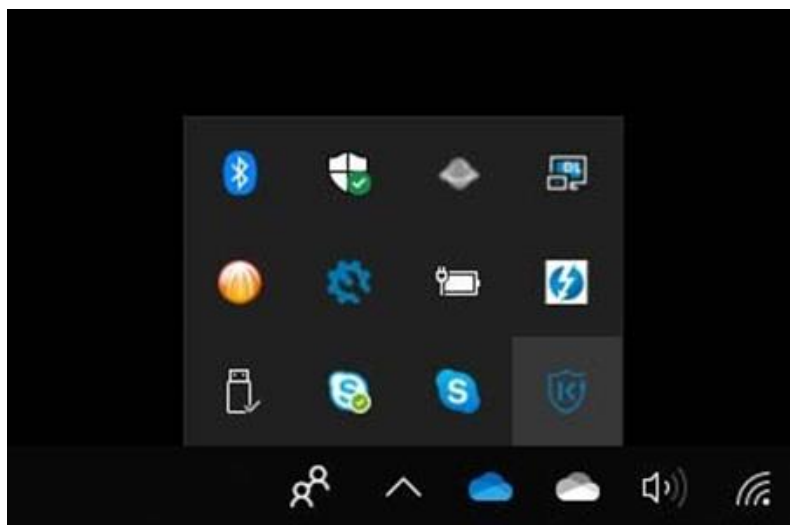
7. The installation process may take a few seconds to complete.



8. A message is provided letting you know that DockWorks™ has completed its installation process. Click 'Finish' to complete the installation.

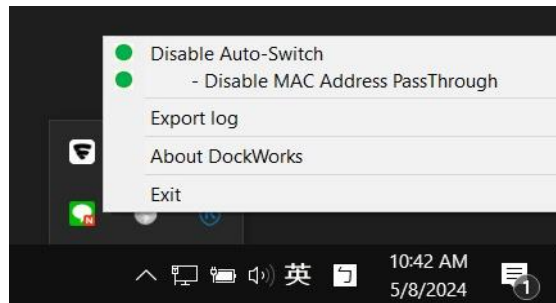


9. DockWorks™ is now installed on your computer and can be accessed via the Task Tray or by navigating to Start → All Programs → Kensington → Kensington DockWorks™



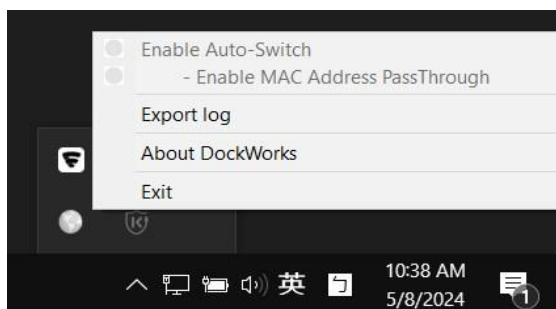
10. With DockWorks™ installed, you can:

- Enable (green) or Disable (red): Wi-Fi® Auto-Switch
 - Wi-Fi® Auto Switch allows the dock to prioritize LAN (Ethernet) over Wi-Fi® when you are docked. When you undock, the laptop will resume using Wi-Fi®.
Note: Switching from Ethernet to Wi-Fi® can take up to 1 minute, depending on the computer.
- Enable (green) or Disable (red): MAC Address Passthrough
 - MAC Address Passthrough allows the docking station to mirror the Laptop's ethernet NIC (Network Interface Card) MAC ID.
- About DockWorks™
 - Informs you of the latest version installed, as well as lets you check if a newer version is available.
- Export log
 - Export log files as a zip with timestamp naming to the selected folder. DockWorks™ will remember the user's preferred path for the next export action.
- Exit
 - Allows you to close DockWorks™



Note:

- When a Kensington docking station is not connected, the Wi-Fi® Auto-Switch and MAC Address Passthrough features are locked.



- MAC Address Passthrough is locked when Wi-Fi® Auto-Switch is in the off status.

